



**EtherUSB™**

**AdminTool User Manual**

**V 1.6**

**Clarinet Systems, Inc.**

## Publication Revision No. Control Table

Rev. No.	Date	Contents
1.6	04/28/08	Change the Home page and USB Ports page.
1.5	05/25/07	Replace name on login page on page 1. Replace pictures from page 2 to 8.
1.4	04/26/07	
1.1	02/08/07	Updated GUI screenshots
1.0	01/16/07	
0.6	10/25/06	Added Demo Unit Connections & synced with GUI screenshots. Polish minor mismatch points in the pages.

### Copyright

Copyright 2006-2008 Clarinet Systems, Inc. All rights reserved. Information in this document is subject to change without notice. No part of this publication may be transmitted, transcribed, reproduced, stored in any retrieval system or translated into any language or computer language in any form or by any means, mechanical, electronic, optical, chemical, manual or otherwise, without the prior written permission of Clarinet Systems, Inc., 48834 Kato Road, #101A, Fremont, CA 94538

Clarinet Systems and EtherUSB are trademarks of Clarinet Systems, Inc.

All other company and product names are trademarks or registered trademarks of their respective owners.

## Table of Contents

<i>Introduction &amp; Login Screen</i> -----	1
<i>Home Page</i> -----	2
<i>Identification</i> -----	3
<i>Network Settings - Device</i> -----	4
<i>Network Settings – USB Ports</i> -----	5
<i>System Admin - Admin Settings</i> -----	5
<i>System Admin - Firmware Update</i> -----	6
<i>Reports &amp; Stats</i> -----	7

## Introduction

This document describes the graphic user interface (GUI) of the EtherUSB™ AdminTool and is designed to explain by graphic examples the functions of this configuration and administration software utility. AdminTool can be accessed via URL <http://IP-address:9876> or <http://Device-name:9876>. EA104 belongs to EtherUSB product line. This AdminTool also is shared by EthIR LAN™ ESB5001/5004.

## Login Screen

When the EA104 device is plugged in and connected to the network, open an Internet Explorer browser window and enter the following into the URL area and press enter.

<http://IP-address:9876> (or <http://Device-name:9876>)

Login Screen will be presented.



The default User name and Password are admin/password. Click "OK" to continue.

## Home Page

This page displays the **current settings and configuration being used by the system**. For example, if the EA104 device is set for DHCP, the IP Address area will display the DHCP IP address received from DHCP server.

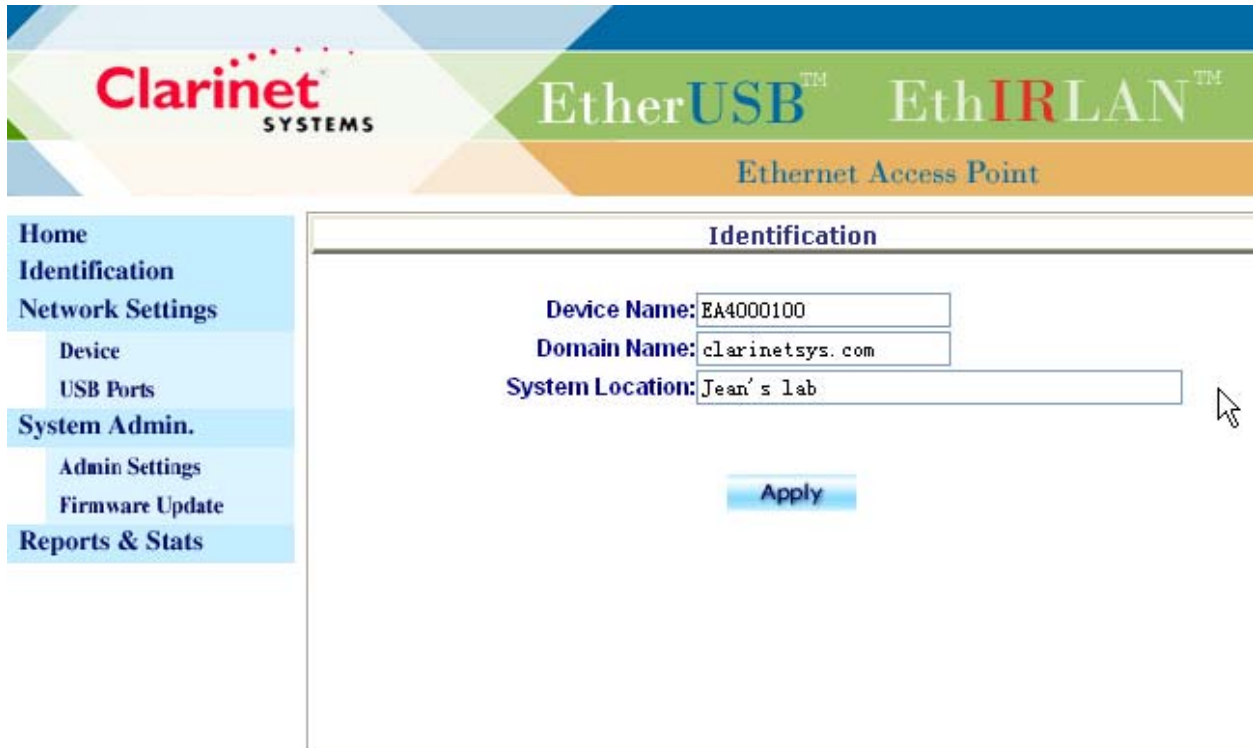
The Uptime area displays the duration since the last power cycling of the device, which is calculated and displayed as the number of days with the format xxxx, and hours updated per second with the format xx:xx:xx (<hours:minutes;second>).

The screenshot shows the web interface for an Ethernet Access Point. The header includes the Clarinet Systems logo and the product names EtherUSB™ and EthIR LAN™. The main content area is divided into several sections:

- Identification:**
  - Device Model: EA104
  - Device Name: EA4000K05
  - Domain Name: clarinetsys.com
  - System Location: unspecified
- Network Configuration:**
  - Mac Address: 00:10:9D:4B:30:35
  - IP Address: 192.168.15.101 (Dynamic ip used)
  - Subnet Mask: 255.255.255.0
  - Gateway: 192.168.15.1
  - WINS: 192.168.15.1 (0.0.0.0)
  - DNS: 192.168.15.1 (0.0.0.0)
- USB Ports:**
  - IP Group: Alternative IP Group
- System:**
  - Serial Number: 0703U01001
  - Option Key: SXYKSJ
  - Uptime: 0 days, 4:17:34

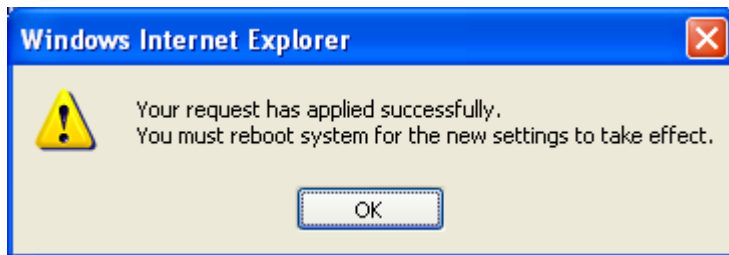
The left navigation menu includes: Home, Identification, Network Settings (with sub-items Device, USB Ports), System Admin. (with sub-items Admin Settings, Firmware Update), and Reports & Stats.

## Identification



The **Identification** page displays the stored Device Name setting for the device. The user can modify the fields and click on Apply to have the new settings saved into the system. All modifications will take effect only after **Apply** and “System Restart” are selected on the Admin Settings page or the unit is power cycled.

The following box will be prompted once **Apply** is clicked.



The page will be refreshed once **OK** is clicked

## Network Settings - Device

Clarinet SYSTEMS EtherUSB™ EthIRLAN™ Ethernet Access Point

Home  
Identification  
Network Settings  
Device  
USB Ports  
System Admin.  
Admin Settings  
Firmware Update  
Reports & Stats

Network Settings- Device

Static IP

Static IP  DHCP Client

IP : 192 . 168 . 101 . 36

Subnet mask : 255 . 255 . 255 . 0

Gateway : 192 . 168 . 101 . 3

WINS 1 : 192 . 168 . 101 . 4

WINS 2 : 192 . 168 . 101 . 8

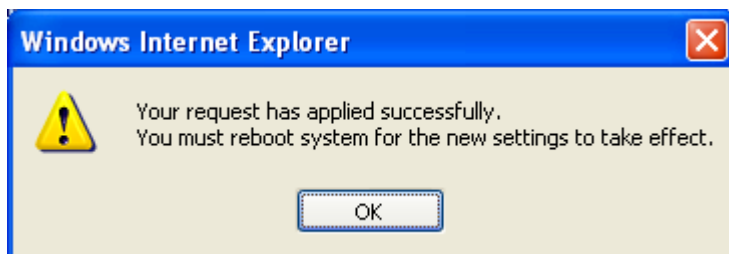
DNS 1 : 192 . 168 . 101 . 4

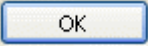
DNS 2 : 192 . 168 . 101 . 8

Apply

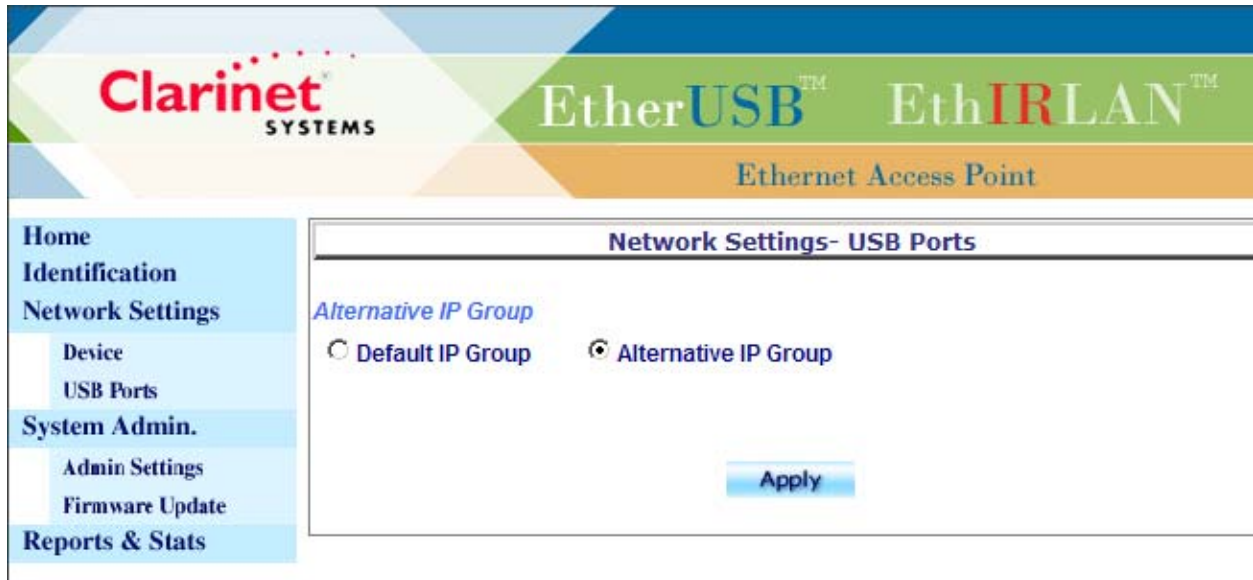
The **Network Settings - Device** page displays the stored network-related settings for the device. The user can modify the fields and click on Apply to have the new settings saved into system. All modifications will take effect only after **Apply** and “System Restart” are selected on the Admin Settings page or the unit is power cycled.


The following box will be prompted once **Apply** is clicked.



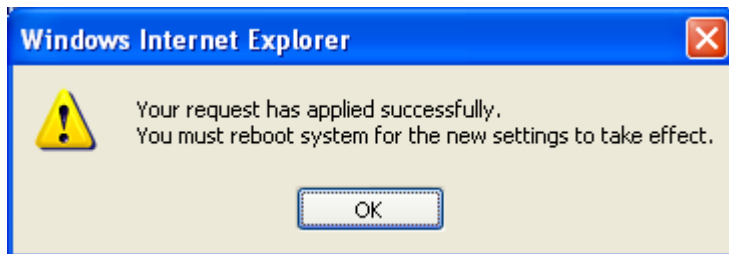
The page will be refreshed once  is clicked.

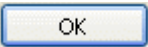
## Network Settings – USB Ports



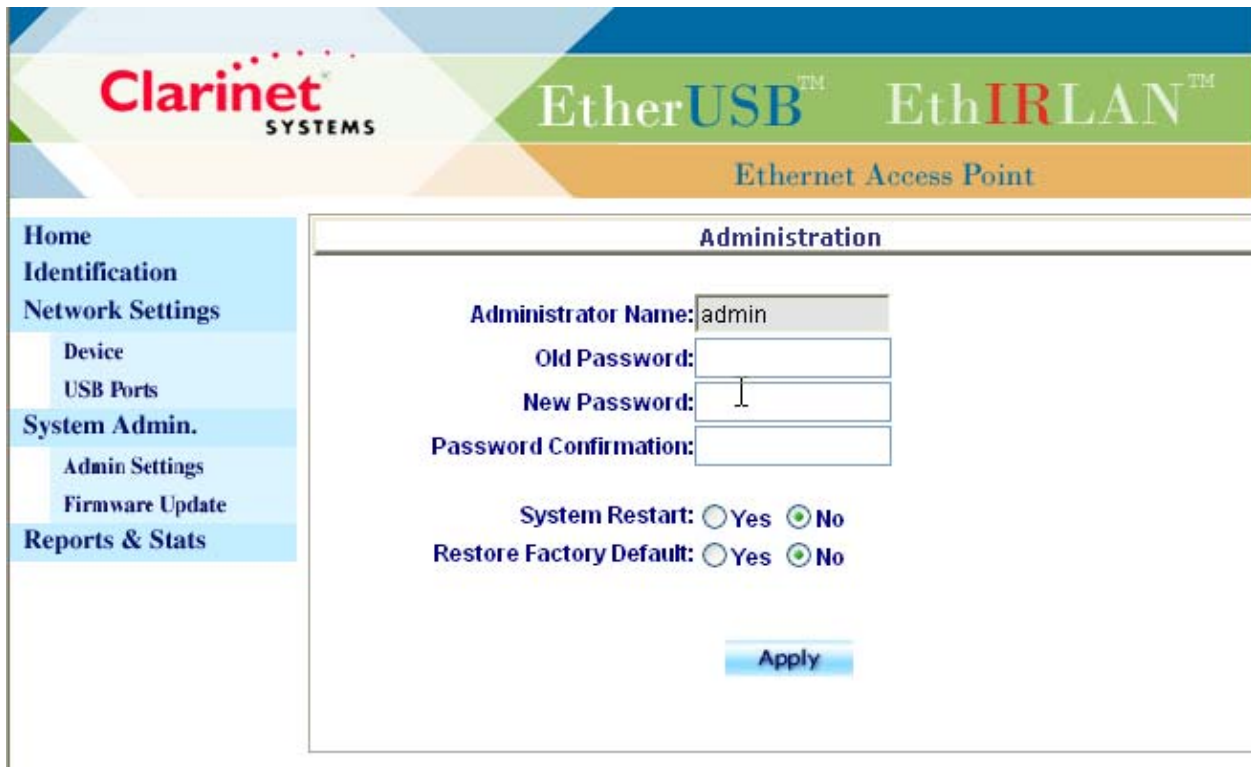
The **Network Settings – USB Ports** page displays the Default IP Group or Alternative IP Group settings for USB ports. The user can modify the fields and click on Apply to have the new settings saved into flash memory. All modifications will take effect only after  and “System Restart” are selected on the Admin Settings page or the unit is power cycled.

The following box will be prompted once  is clicked.



The page will be refreshed once  is clicked.

## System Admin. – Admin Settings



The **Administration** page provides administration configuration for the device. The user can modify the fields and click on Apply to have settings saved into flash memory. New Password/Password Confirmation, System Restart, and Restore Factory Default will take effect after **Apply** is selected, without the need of selecting “System Restart” on the Admin Settings page or power cycling. Only one action at a time: either “System Restart” or “Restore Factory Default” can be selected as “Yes”.

The following box will be prompted once **Apply** is clicked to change password.

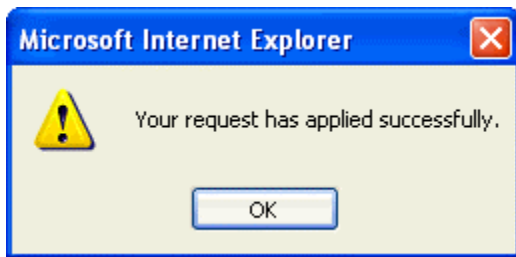


## System Admin. - Firmware Update



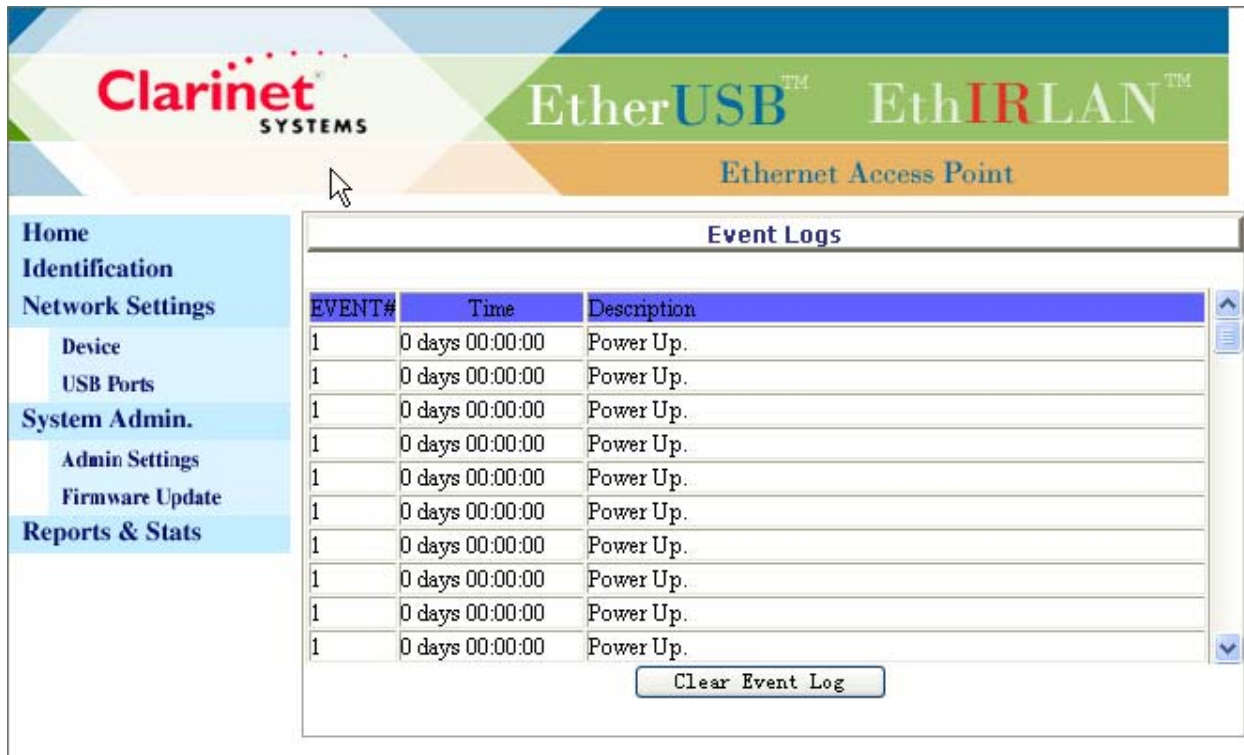
The **Firmware Update** page allows the user to update the device with updated firmware. The new firmware will take effect only after “SYSTEM RESTART” on the Admin Settings page is selected or upon power cycling.

The following box will be prompted once update is complete (~65 seconds after **Apply** is clicked), then followed by System Restart which will take another 25 seconds to finish.



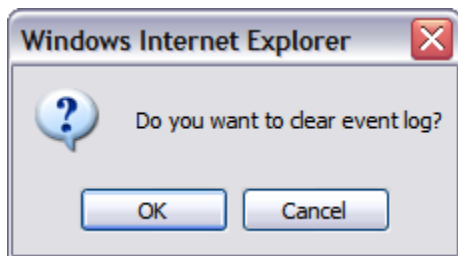
**Caution:** please don't power cycle or reset the device during Firmware Update.

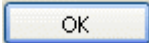
## Reports & Stats



The **Reports & Stats** page provides the user Event Logs with information about the device status. Selecting “Clear Event Log” will reset the Event Logs and take effect after clicking, without the need for selecting “SYSTEM RESTART” on Admin Settings page or power cycling. One hundred latest events will be kept. Event number will restart after power up, System Restart, and Restore Factory Default.

The following box will be prompted once “Clear Event Log” is clicked.



The page will be refreshed once  is clicked.